

# PRODUCT DATASHEET

## Confidex 208 mm x 150 mm Crosswave Label

Paper based shipping label for plastic containers

### GENERAL

#### Project

Confidex 208 mm x 150 mm Crosswave label

#### Datasheet number

D014340

#### Version history

Version	Modification
V001	Initial version

#### Confidentiality

The information in this document is confidential and may be legally privileged.

### ELECTRICAL SPECIFICATION

#### Device type

Class 1 Generation 2 passive UHF RFID transponder

#### Air interface protocol

EPCGlobal Class1 Gen2 ISO 18000-6C

#### Operational frequency

Global 860-960MHz

#### IC type

Impinj Monza 4E

#### Memory configuration

With Monza 4E EPC 496 bit; 128 bit user memory

#### Read range (2W ERP)\*

Up to 10 meters on plastic at ETSI and FCC frequencies

#### Applicable surface materials\*

Non-metallic surfaces

\* Read ranges are theoretical values that are calculated for non-reflective environment, in where antennas with optimum directivity are used with maximum allowed operating power according to ETSI EN 302 208 (2W ERP). EU = 865 - 868 MHz, US = 902 - 928 MHz. Different surface materials may have an effect on performance.

### MECHANICAL SPECIFICATION

#### Label materials

Thermal transfer printable paper face layer, resin ribbon recommended. Face color yellow pantone 100 C. Perforation and trigger notch between labels. No adhesive behind the label.

#### Delivery format

On reel, 600 pcs/reel

#### Pitch on reel (nominal)

208 mm / 8.19"

#### Reel core inner diameter

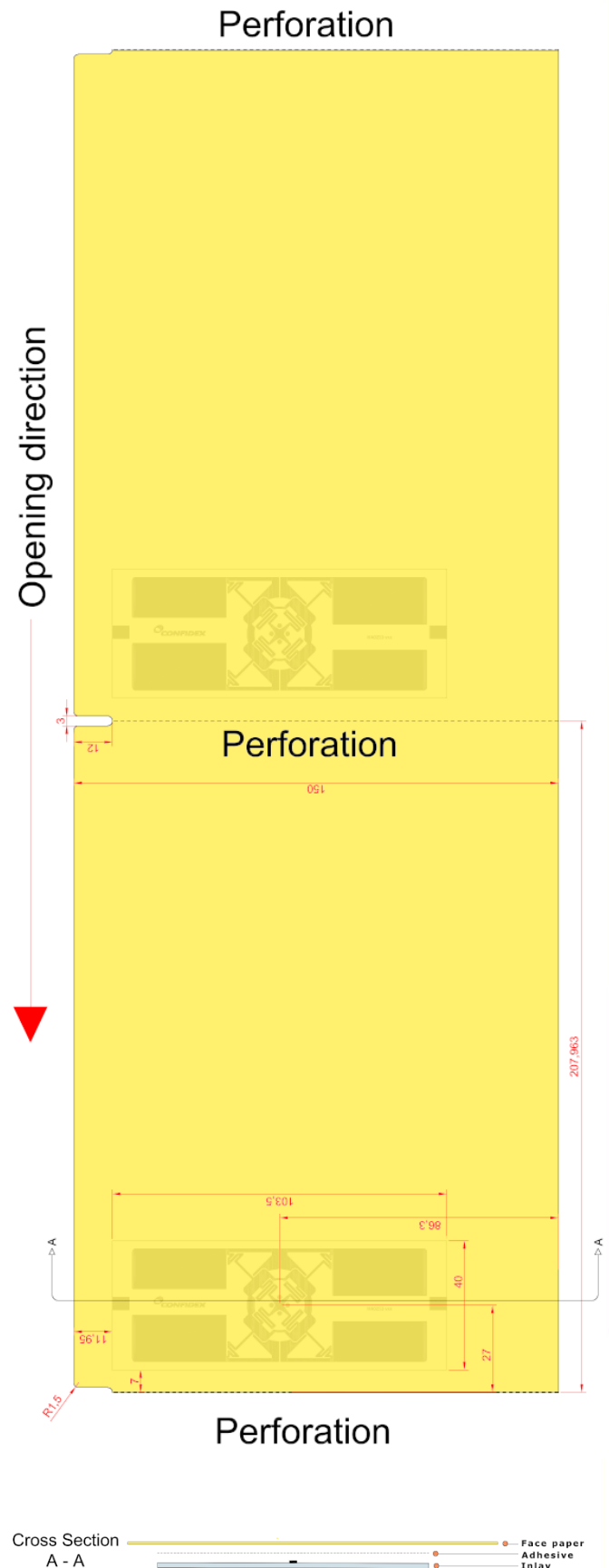
76.2 mm / 3"

#### Bad label marking

Non-functional labels are marked with "XXX"

#### Label dimensions

208 mm x 150 mm x 0.2 mm / 8.19" x 5.91" x 0.01"



## ENVIRONMENTAL RESISTANCE

**Operating temperature**

-20°C to +70°C / -4°F to 158°F

**Ambient temperature**

-20°C to +70°C / -4°F to 158°F

**Storage condition**

1 year in +20°C / 50% RH (shelf life for adhesive)

**Expected lifetime**

Meant for short term use, in normal operating conditions  
lifetime can be years

*Values in the table are the best recommendations; resistance against environmental conditions depends on the combination of all influencing factors, exposure duration and chemical concentrations. Thus, product's final suitability for certain environmental conditions is recommended to be tested. Contact Confidex for more specific information.*

## PERSONALIZATION OPTIONS

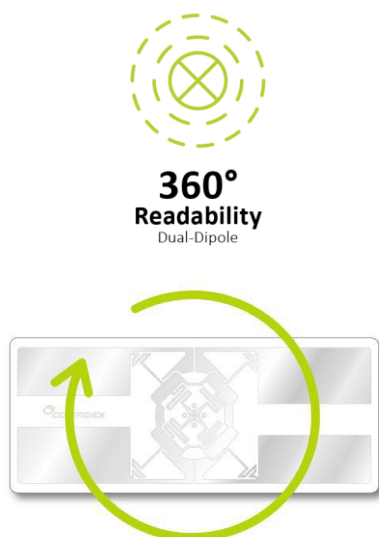
**Pre-encoding**

- Customer specific encoding of EPC or user memory. Locking permanently or with password. Confidex offers also data encryption when required.

**Customer specific visual printing**

- Variable data like barcodes, human readable text, serial number etc. printed on the yellow side of the label.

## INSTALLATION INSTRUCTIONS



The label is delivered with no adhesive on the backside, so additional adhesive or plastic pockets are required for label attachment.

Minimum bending diameter of label is defined to be 50 mm. Do not bend the label above the limit. Never touch on the location of the IC. IC chip is sensitive electrical component and can be damaged if unexpected pressure is applied on the chip.

## ORDER INFORMATION

**Product number:** 3001986**Product name:** Confidex 208 mm x 150 mm Crosswave label

For additional information and technical support contact  
Confidex Ltd.

**DISCLAIMER**

THE MATERIALS, PRODUCTS AND SERVICES ARE SOLD SUBJECT TO ITS STANDARD CONDITIONS OF SALE, WHICH ARE INCLUDED IN THE APPLICABLE DISTRIBUTOR OR OTHER SALES AGREEMENT. ALTHOUGH ANY INFORMATION, RECOMMENDATIONS, OR ADVICE CONTAINED HEREIN IS GIVEN IN GOOD FAITH, CONFIDEX MAKES NO WARRANTY OR GUARANTEE, EXPRESS OR IMPLIED, (i) THAT THE RESULTS DESCRIBED HEREIN WILL BE OBTAINED UNDER END-USE CONDITIONS, OR (ii) AS TO THE EFFECTIVENESS OR SAFETY OF ANY DESIGN INCORPORATING ITS PRODUCTS, MATERIALS, SERVICES, RECOMMENDATIONS OR ADVICE. EXCEPT AS PROVIDED IN CONFIDEX STANDARD CONDITIONS OF SALE, CONFIDEX AND ITS REPRESENTATIVES SHALL IN NO EVENT BE RESPONSIBLE FOR ANY LOSS RESULTING FROM ANY USE OF ITS MATERIALS, PRODUCTS OR SERVICES DESCRIBED HEREIN.

Each user bears full responsibility for making its own determination as to the suitability of Confidex products, materials, services, recommendations, or advice for its own particular use. Each user must identify and perform all tests and analyses necessary to assure that its finished systems incorporating Confidex products, materials, or services will be safe and suitable for use under end-use conditions. Nothing in this or any other document, nor any oral recommendation or advice, shall be deemed to alter, vary, supersede, or waive any provision of this Disclaimer, unless any such modification is specifically agreed to in a writing signed by Confidex.